

Bakhita Ridge

Date of Completion:
April, 2007

Program Summary:

A single-family residence for a couple situated adjacent to a historic barn in a hilltop clearing on the edge of an Ozark college town.

Program Statement:

Situated in a hilltop clearing of a twelve acre site at the edge of Fayetteville, the Bakhita Ridge House, an informal home for an informal couple, sits in equipoise with an early 20th century barn. The design employs vernacular strategies fused with the potency of modernism to establish a series of dialogues, including old/ new, opaque/ transparent, axial/ diagonal, inside/ outside, and servant/ served.

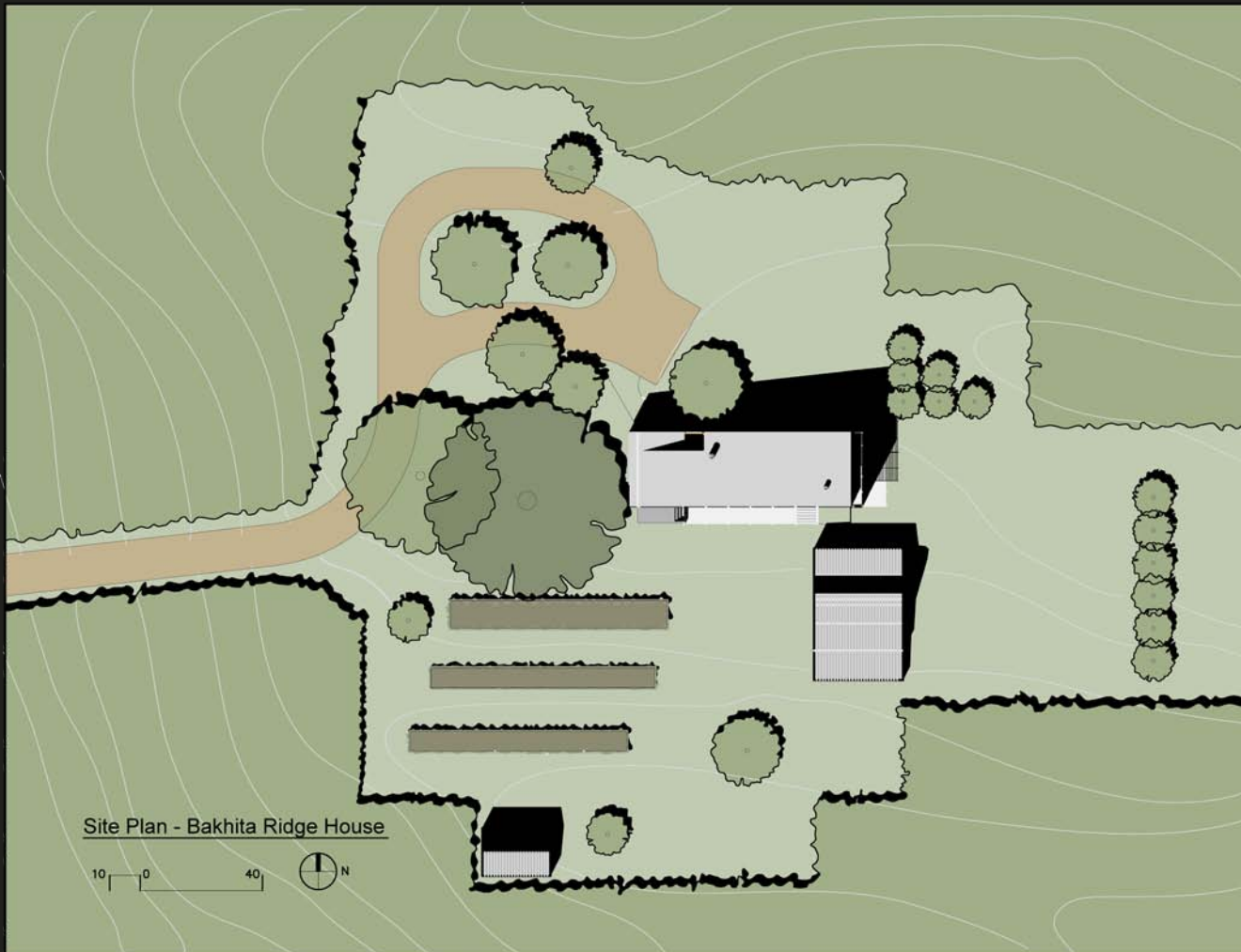
A narrow, compact plan (25' x 75') with long stretches of protected glass and a graduated double volume maximizes the penetration of natural light and takes advantage of views to the bucolic setting. The house has two fronts with the northern entry providing the traditional arrival sequence while the dominant transparencies open the public realm to the couple's regimen of gardening on the south sloping hill. The private areas of the house are oriented toward a more intimate yard formed by the barn, an orchard, and a bosque to the east. Exterior volumes subtracted from the wedge-form provide protected gathering spaces off the living room and guest quarters, provide surreptitious light to interior spaces, and provide another secluded repose at the guest quarters on the second level loft.

The house is built entirely of SIPS panels spanning 15' x 25' structural bays, sided in standing-seam Galvalume® and rising from a site-formed concrete 'waist' wall. Other sustainable materials and strategies include; ply-joists, bamboo flooring, Arkansas cypress & powder-coated steel trellises, ground-source heat pump, roof-water collection for irrigation, and multiple operable window permutations to facilitate seasonal-appropriate cross ventilation.

Bakhita Ridge

Site Plan

Located on a hilltop clearing, the house is situated to take advantage of views to the gardens to the south and to establish a dialogue between the existing barn. Its location on the site creates both public and private exterior spaces.



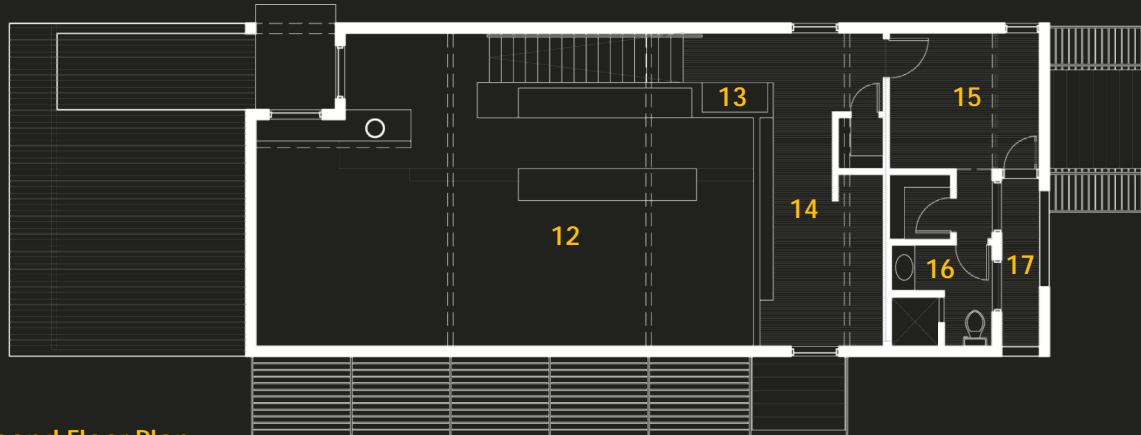
Bakhita Ridge

Floor Plans

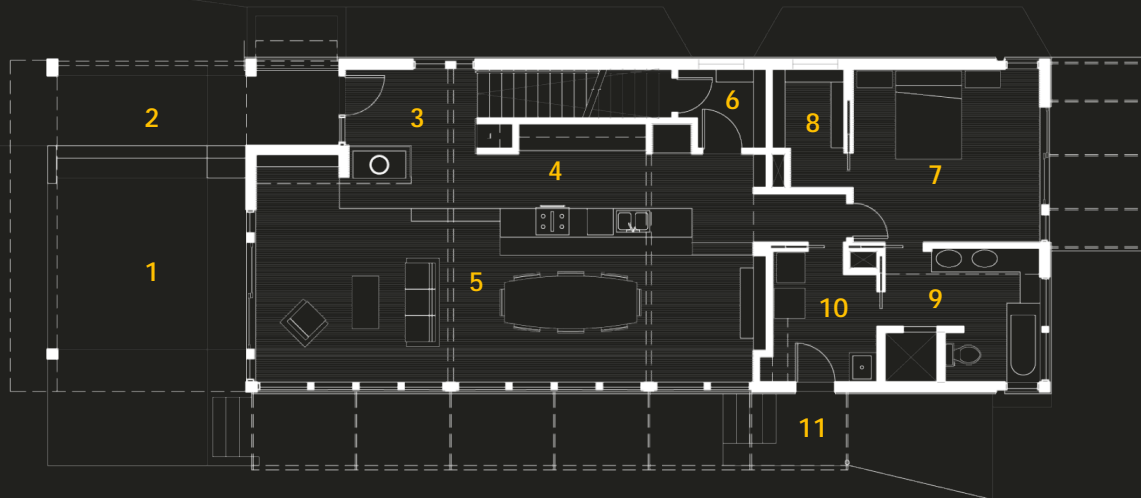
The west side of the first floor contains all of the public spaces of the house. The open floor plan and the large windows along the south walls extend the interior to the outside. The ceiling vaults from 14 feet up to allow for a sewing loft and a second floor. The eastern two-story side contains the private areas of the house: a master suite on the first floor and a guest suite on the second floor.

Room Legend

1. Living Porch
2. Entry Porch
3. Entry
4. Kitchen
5. Living/ Dining
6. Pantry
7. Master Bedroom
8. Master Closet
9. Master Bathroom
10. Laundry
11. Garden Entry
12. Open to Below
13. Computer Workstation
14. Sewing/ Sleeping Loft
15. Guest Bedroom
16. Guest Bathroom
17. Sun Deck



Second Floor Plan



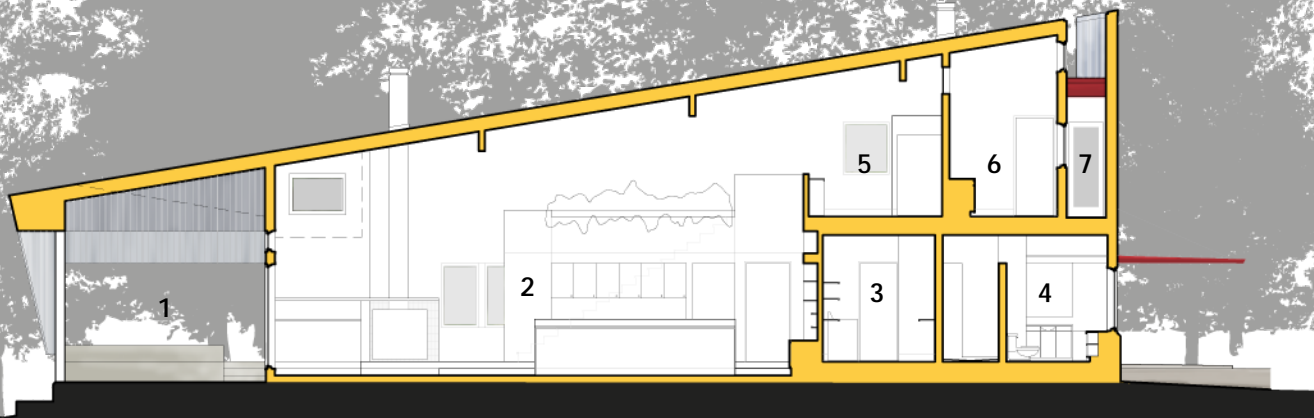
First Floor Plan



Bakhita Ridge

Longitudinal Section

The shell of SIPs panels allow the ceiling to run parallel with the roof, creating a large, open living, dining and kitchen space. A sewing/ sleeping loft overlooks this space. A covered living porch is carved out of the western end of the wedge form.



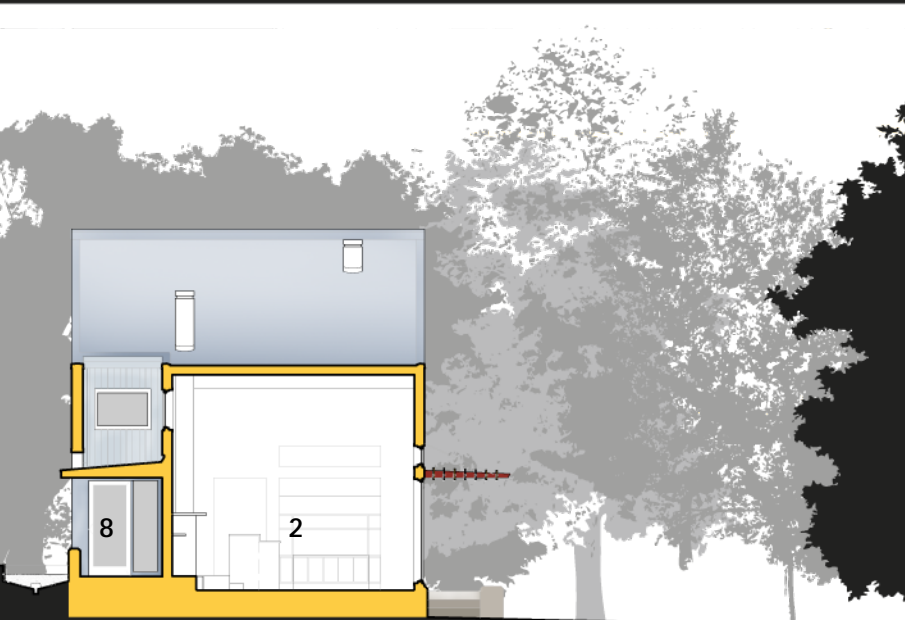
1 0 5 **Longitudinal Section**

Room Legend

1. Living Porch
2. Living/ Dining/ Kitchen
3. Laundry
4. Master Bathroom
5. Sewing/ Sleeping Loft
6. Guest Bathroom
7. Sun Deck
8. Entry Porch

Cross Section

The simple shed roof is manipulated and lowered over the entry porch to create a more intimate and compressed entry sequence before the interior of the house opens up to a sloped ceiling and expansive windows looking out onto the gardens. This carving of space also allows for the addition of a few windows, bringing in more natural light from the north.



1 0 5 **Cross Section**

Bakhita Ridge

North Elevation

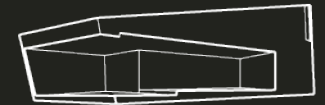
Beginning with a simple, shed roof and a wedge form, the project takes shape through a subtractive process to create interior and exterior spaces.



1 0 5

North Elevation

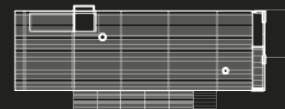
Form Diagram



Bakhita Ridge

East Elevation

The private, eastern end of the house contains the master suite on the first floor and the guest suite on the second floor. Both suites have an exterior porch, the master porch protected by a solid roof incorporated into the trellis, and the guest sundeck open to the sky and views to the south and east.



Bakhita Ridge



Concrete Wall Detail

The structural SIPS panels rest on a "waist" wall of board formed concrete

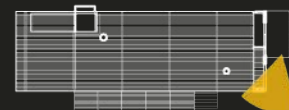


Trellis Detail

The trellis provides shade and protection on the east (private) end of the house. The trellis is constructed of powder coated steel brackets, hung by steel cables, and completed with Arkansas cypress boards.

Open Downspout Detail

The galvalume downspout is mounted to the face of the galvalume wall panels and recessed into the concrete "waist" walls

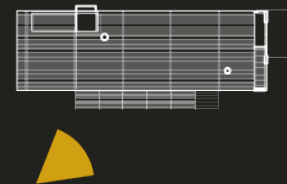




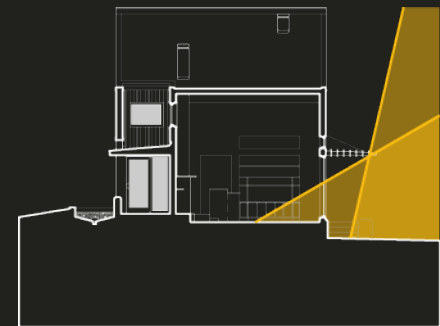
Bakhita Ridge

South Elevation

A large span of windows runs along the south wall of the house. The trellis is designed to shade the windows from the harsh southern sun during the summer, but allow the lower winter sun to directly hit and warm the house in the colder months.



Trellis Diagram



Bakhita Ridge

View from the Kitchen looking to the Southwest

The kitchen is the heart of the home with views to the west, south and east through the master suite. The kitchen is built a few steps above the living/ dining area to allow the owners a commanding presence. This terracing of the interior space mimics the terracing of the gardens beyond.





Bakhita Ridge

View from the Living Area looking East

The large, open space plan of the living/ dining/ kitchen areas is finished in cool green walls, maple cabinetry and bamboo floors. A sewing loft overlooks this space on the east end.





Bakhita Ridge

View from the Dining Area looking West

With an abundance of windows, the owners rarely need to use artificial lighting during the day. The south facing windows blur the connection between inside and out.

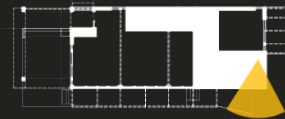




Bakhita Ridge

Sun Deck

Located off of the guest suite, a sun deck is carved out of the house form to provide a private outdoor area. This area also aids in the penetration of natural light further into the interior spaces of the second floor.





Bakhita Ridge